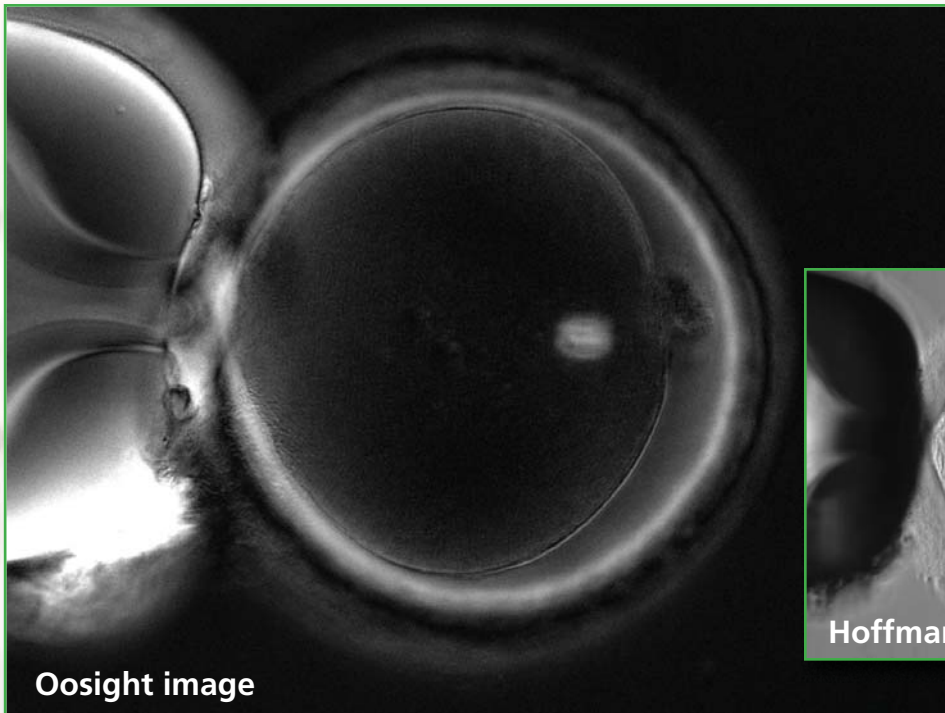


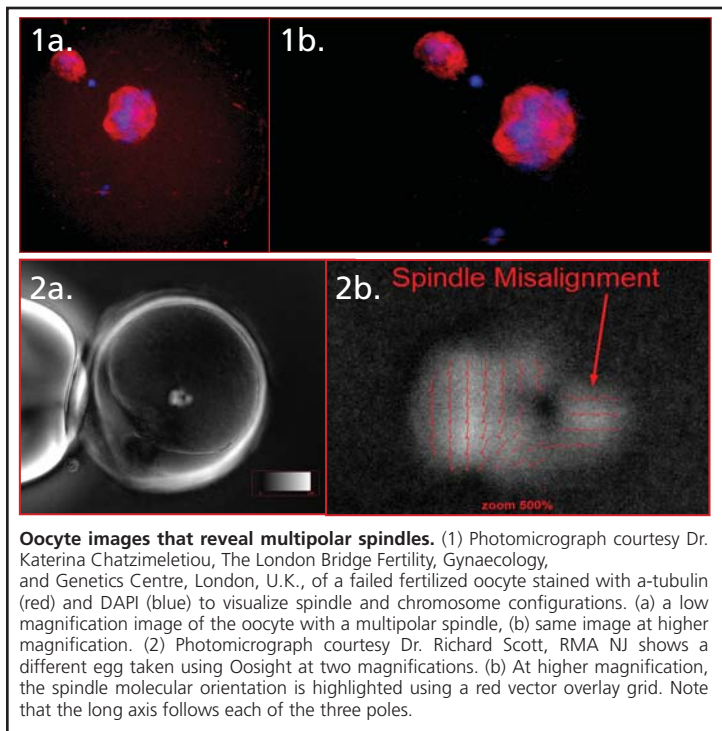
Oosight Delivers Success. Success in the IVF lab depends greatly upon the health of an oocyte. CRI's new Oosight Imaging System reduces some of the uncertainty of IVF by improving how oocyte quality is assessed. Studies show that an oocyte is healthier when the calculated spindle density is high, the spindle orientation is barrel-shaped, and the density of the inner layer zona pellucida is high. Oosight enables you to improve egg quality assessment through these accurate and reproducible measurements.



Oosight Delivers Performance.

Oosight, the next generation of CRI's SpindleView™ system provides real-time imaging with easy-to-use Windows™-based software. Oosight is the fast and effortless solution for the real-time detection and assessment of vital structures in the egg. High-quality optics and unique algorithms ensure that the data are accurate and reproducible to provide objective results for improving egg grading and quality control.

Oosight Delivers Versatility. Choose from three affordable Oosight imaging systems: Basic, Meta and Ultra versions. Oosight Ultra is an advanced user platform with a high-end ultra-sensitive digital camera and powerful measurement tools. Oosight Meta and Ultra are the right choices for a variety of applications, including Egg Grading, ICSI and Egg Freezing Studies. Integrate the system onto any ICSI workstation and use it in combination with most laser systems! **Call CRI today to determine which Oosight setup is most compatible with your workstation and application.**



Oocyte images that reveal multipolar spindles. (1) Photomicrograph courtesy Dr. Katerina Chatzimeletiou, The London Bridge Fertility, Gynaecology, and Genetics Centre, London, U.K., of a failed fertilized oocyte stained with a-tubulin (red) and DAPI (blue) to visualize spindle and chromosome configurations. (a) a low magnification image of the oocyte with a multipolar spindle, (b) same image at higher magnification. (2) Photomicrograph courtesy Dr. Richard Scott, RMA NJ shows a different egg taken using Oosight at two magnifications. (b) At higher magnification, the spindle molecular orientation is highlighted using a red vector overlay grid. Note that the long axis follows each of the three poles.

Assess oocyte quality using quantitative data.

Not every oocyte is created equal and not every patient has healthy oocytes. Utilize the system’s unique LC-PolScope™ technology and quantitative tools to measure spindle and tri-layer zona integrity - two characteristics linked to outcome. Use these measurements to help determine which oocyte is most viable in order to identify patient-specific issues, provide additional criteria for embryo selection and PGD, identify effects from cryopreservation and monitor oocyte maturation *in vitro*.

Monitor effects of oocyte cryopreservation.

The spindle is temperature-sensitive and very susceptible to damage during cryopreservation. Use the Oosight system to assess spindle recovery following the thawing process.

Perform nuclear transfer without staining.

With Oosight, you can remove the spindle in nuclear transfer techniques without using Hoechst dye DNA staining, thus minimizing damage to vital cytoplasmic organelles and ensuring complete spindle removal.

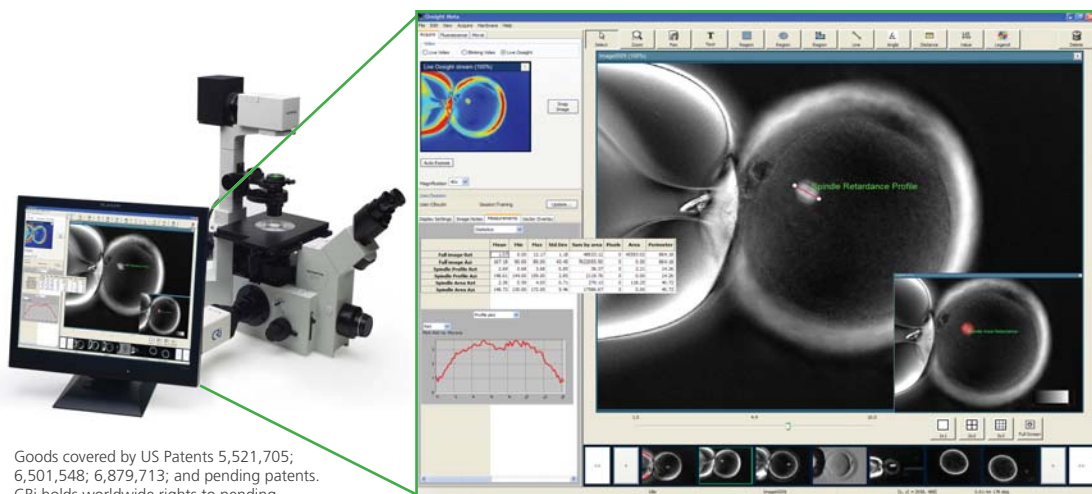
Increase the accuracy of ICSI.

The presence and location of the spindle during ICSI have been linked to outcome. Monitor both to ascertain developmental competence. Studies also suggest that positioning the spindle at 6 or 12 o’clock leads to less embryo fragmentation.

Features:

- Automated Spindle and Zona retardance measurements
- Easy-to-use interface
- Exceptional spindle resolution
- Quantitative data per pixel
- Real-time imaging
- Compatible with most microscopes and laser systems

Contact us today to learn more about Oosight
(P) 1.800.383.7924 ■ oosight@cri-inc.com ■ www.cri-inc.com/oosight



- **NEW** Automated Spindle Finder™
- Calibrated retardance and orientation data
- Simple reporting tools
- Live retardance streaming mode
- Movie capture
- Pseudocolor overlays

Goods covered by US Patents 5,521,705; 6,501,548; 6,879,713; and pending patents. CRi holds worldwide rights to pending application to "Quantitation of Oocytes and Biological Samples using Birefringent Imaging".