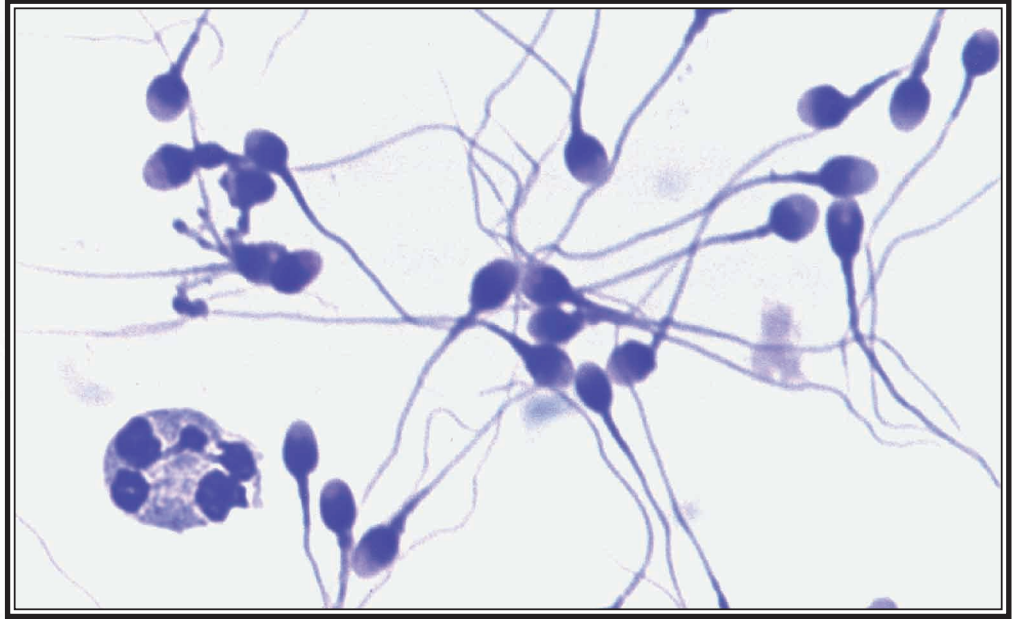


STAT III™

Andrology Stain



See the Difference

- Results in 30 seconds
- Differentiates immature sperm and white blood cells
- “Strict” sperm morphology
- Excellent resolution of head, neck, and tailpiece
- Long term archiving capabilities

*Spermatids (Immature Sperm Cells) can be differentiated from polymorphonuclear white blood cells (WBC) by using the following criteria: WBC contain connecting nuclear bridges and have a granular cytoplasm; Immature Sperm Cells are more spherical in shape.

MidAtlantic
DIAGNOSTICS, INC.

438 N. Elmwood Road • Marlton, NJ 08053
800-648-1151 • 856-762-2000 • Fax: 856-762-2009

www.midatlanticdiagnostics.com

AVAILABLE PRODUCTS

DESCRIPTION		ITEM #
STAT III™ Andrology Stain Stat-Pak	(3 x 90 ml)	85303
STAT III™ Andrology Stain Set	(3 x 500 ml)	85316
STAT III™ Fixative	(1 x 500 ml)	85317
STAT III™ Solution I	(1 x 500 ml)	85318
STAT III™ Solution II	(1 x 500 ml)	85319
STAT III™ Fixative	(1 x Gallon)	85328
STAT III™ Solution I	(1 x Gallon)	85329
STAT III™ Solution II	(1 x Gallon)	85330
STAT III™ Tri-Pak	(3 x Gallon)	85331

